

D_ell

76031 X OR S R/L

MEETS ADA CODE



One Piece Smooth Wall Tub/Shower
High Gloss Gelcoat Finish

FEATURES

• 76031 Dell

Tub/Shower module shall be additionally reinforced with 1/2" O.S.B. All units have an anti-skid floor treatment.

The unit shall have nominal outside dimensions of 60" x 32^{3/8}" and nominal inside dimensions of 55^{3/4}" x 29".

This one piece, above floor unit has an 18" apron and is reinforced for field installation of grab bars.

The unit is made of sanitary grade high gloss polyester gelcoat with reinforced composite matrix.

NOTES

- All units shall have anti-skid floor treatment to meet performance requirements of ASTM F-462-78.
- Units conform to ANSI A-117.1 and ANSI Z-124.2; the shower also complies with the guidelines issued by ADA, US. Architectural and Transportation Barriers Compliance Board (A & T.B.C.B.) and with most city, state and national standards for barrier free, accessible shower facilities for the handicapped.
- Factory installed components are provided with additional back reinforcements to provide code complying structural integrity and are sealed from the back side.
- On Model 76031 S R/L the factory supplied components to be included are four stainless steel grab bars and a removeable seat.
- Curtain rod and shower curtain available. See option for price.



WARRANTY

Georgia Bathware warrants to the purchaser a three year warranty from the date of installation against defects in material and workmanship only.

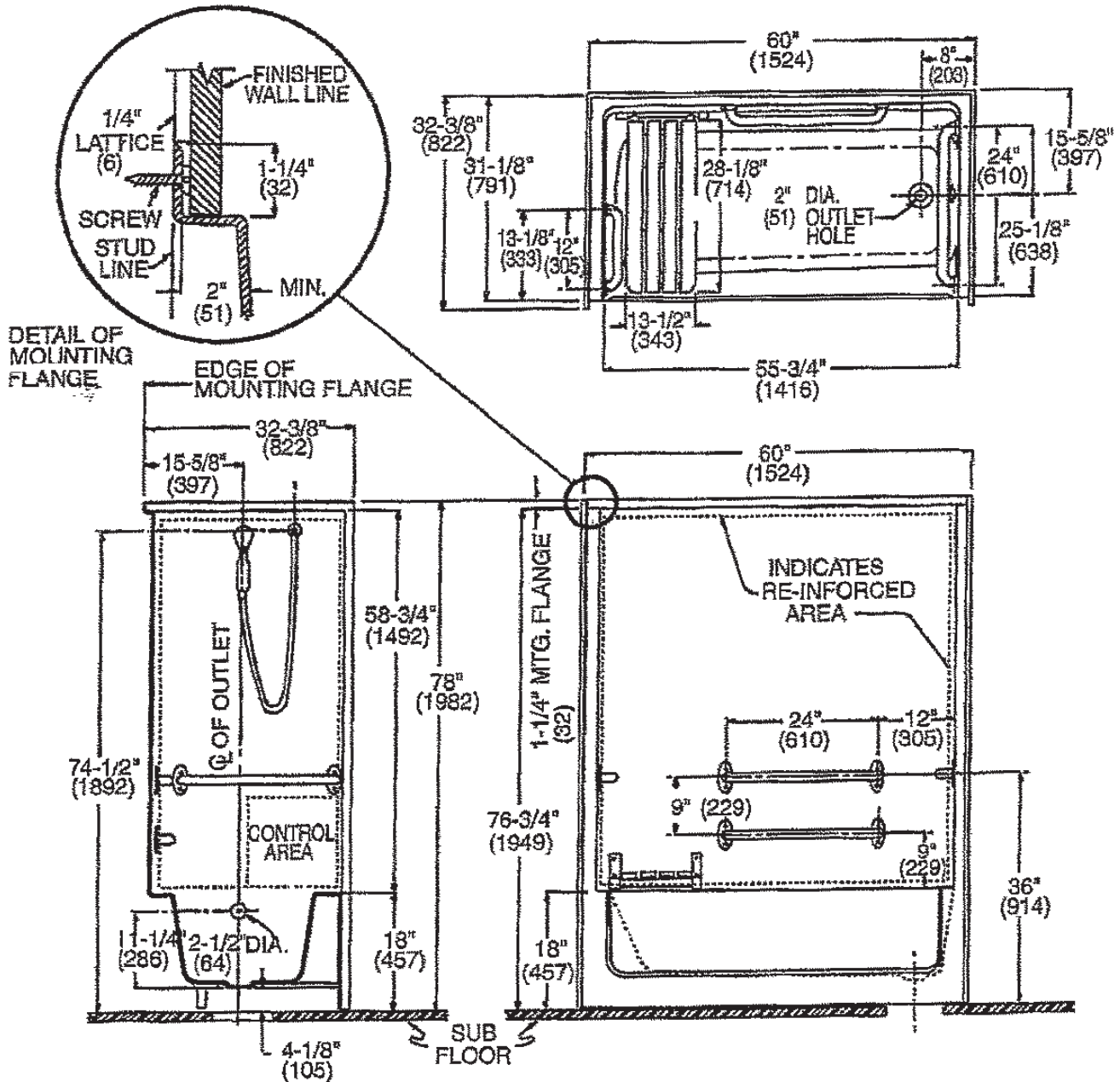
GEORGIA
B A T H W A R E

De11

One Piece Barrier-Free Tub/Shower
High Gloss Gelcoat Finish

76031 X OR S R/L

MEETS ADA CODE



IMPORTANT: Roughing-in dimensions may vary 1/2" and are subject to change or cancellation without prior notice. No responsibility is assumed for use of superseded or voided leaflets.

GEORGIA²

B A T H W A R E